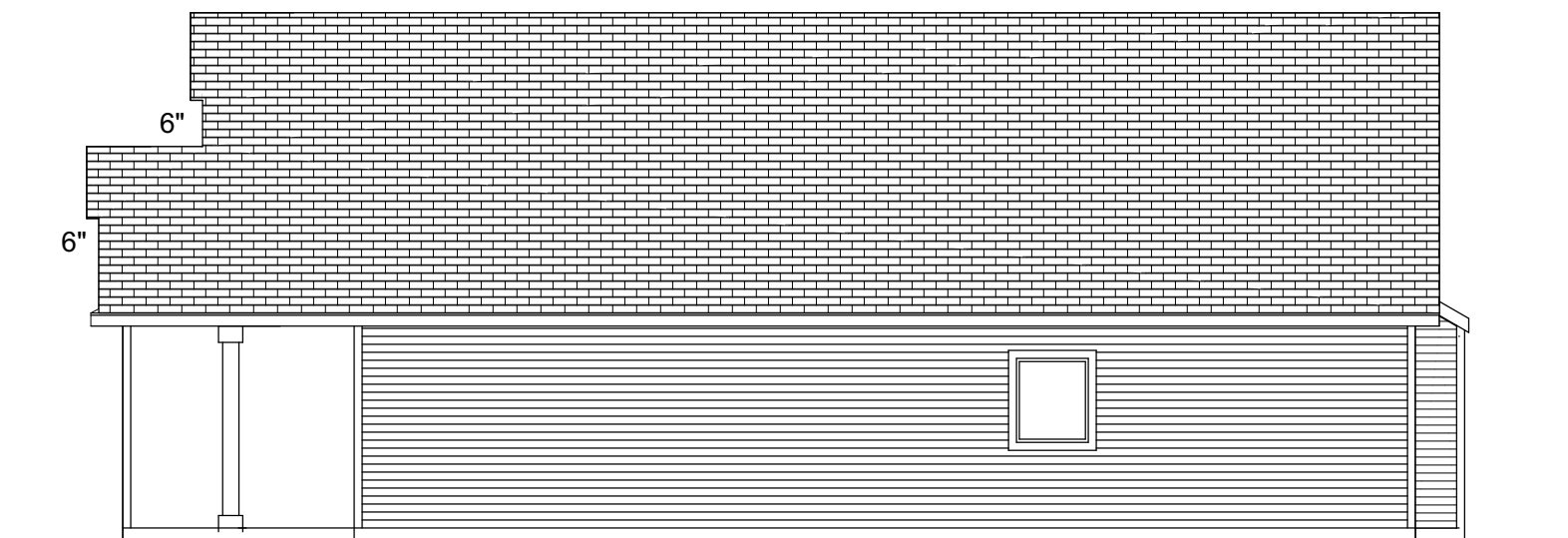


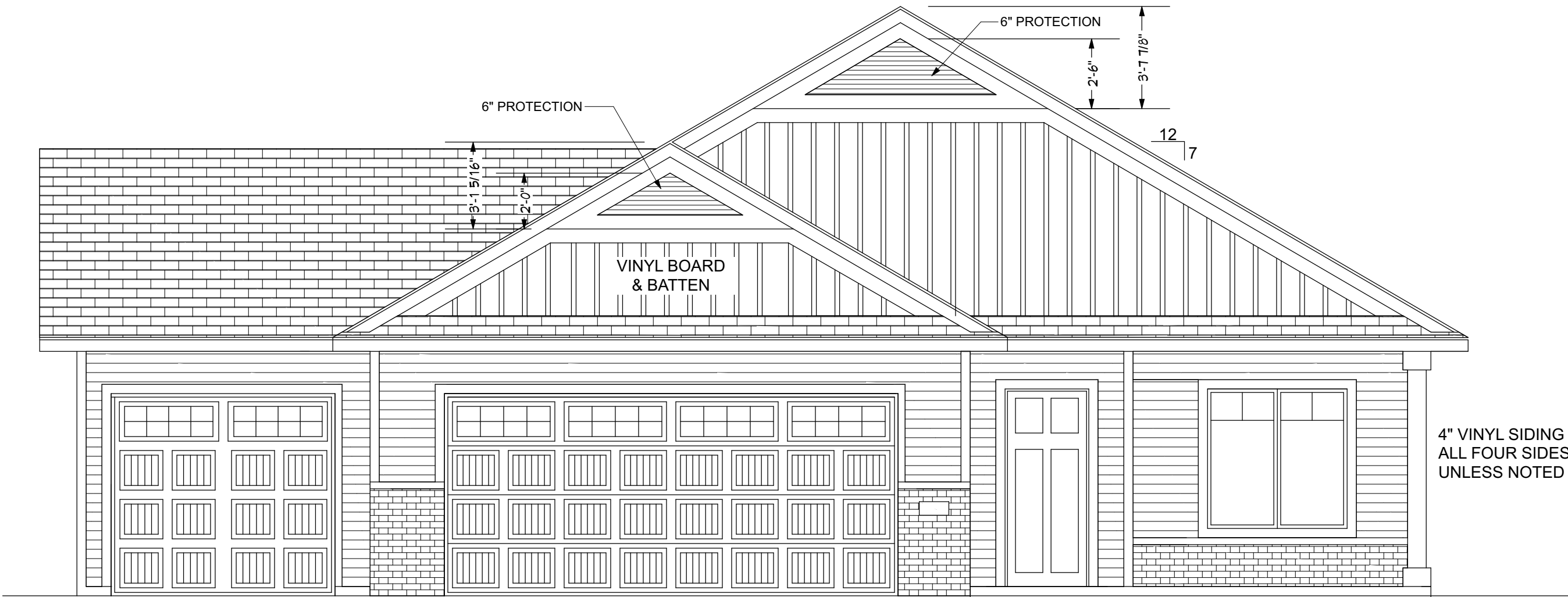
LEFT ELEVATION
SCALE 1/8"=1'-0"



RIGHT ELEVATION
SCALE 1/8"=1'-0"

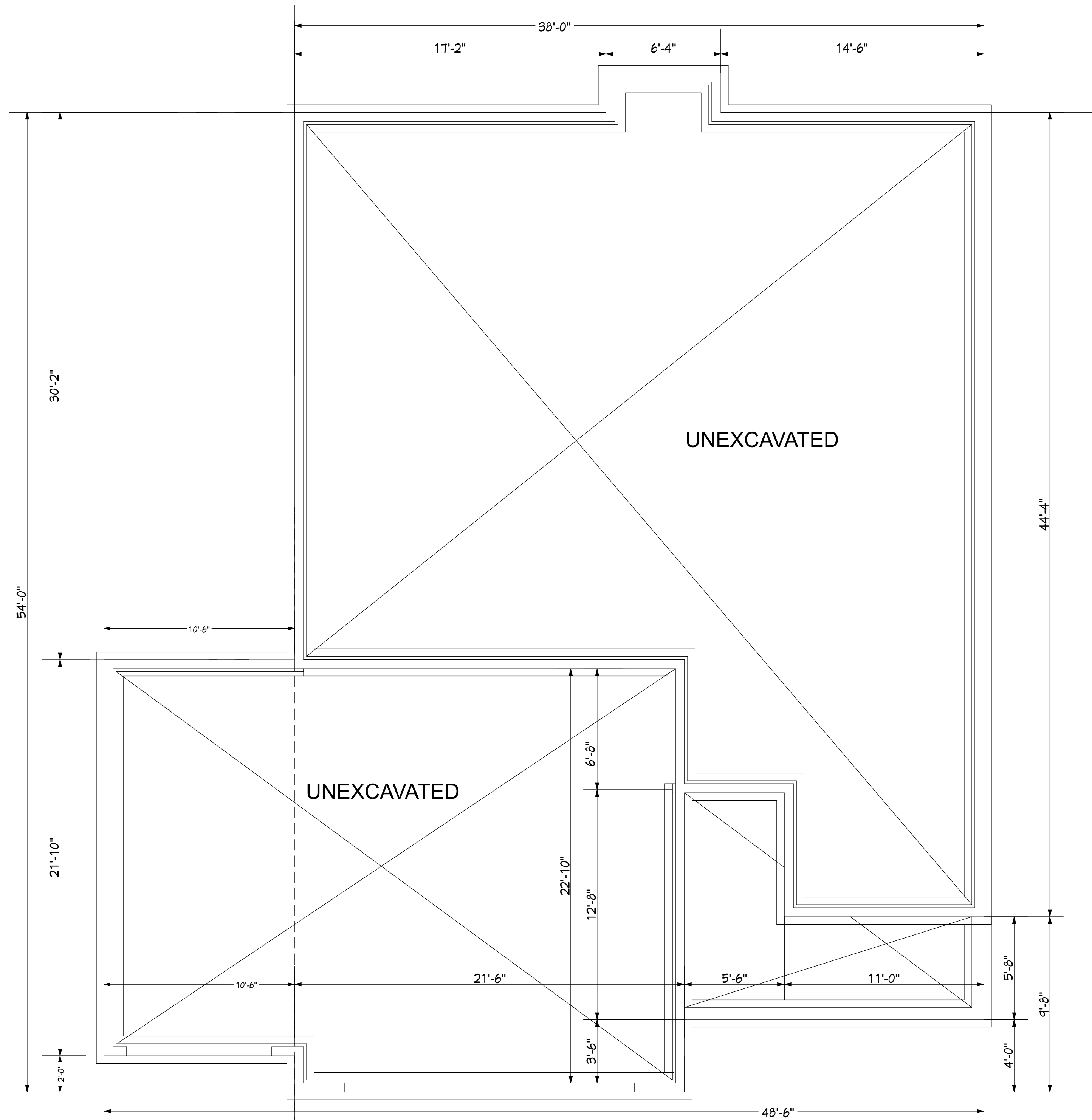


REAR ELEVATION
SCALE 1/8"=1'-0"



FRONT ELEVATION
SCALE 1/4"=1'-0"

Plan #: GV012	Plan In: S.Q. FT. H. = 1328 G. = 748	CONTRACTOR: BIGELOW HOMES	OWNER: EAGLE BASIN MODEL 5-16	These plans are intended by Bigelow Enterprises INC. as a guide for builders who are knowledgeable about normal construction standards and local codes and practices. Bigelow Enterprises INC. will revise its plans to reflect changes in codes and standards as they are issued by the builder before start of his work, but assumes no responsibility for any errors, omissions or improper construction thereafter.		
				Buyer:	Date	Date
By: GFV	Sheet: OF: 1	Sales Rep.		Buyer:	Date	Date
Final: 06.21.24				These plans have been reviewed and approved for construction as drawn. Additional changes will require a change order form.		
3428 Lakeridge Place NW Suite 200 Rochester MN 55901 (507-529-1161)				BIGELOW HOMES <i>Tradition. Excellence.</i>		



LOWER FLOOR PLAN
SCALE 1/4"=1'-0"



These plans are intended by Bigelow Enterprises INC. as a guide for builders who are knowledgeable about normal construction standards and local codes and practices. Bigelow Enterprises INC. will revise it's plans to correct any errors or omissions discovered and reported by the builder before start of his work, but assumes no responsibility for any errors, omissions or improper construction thereafter.

1

1

Date _____

Buyer:

Date _____

Sales Rep.

been reviewed and approved for construction as drawn. Additional changes will require a change order form.

BIGELOW HOMES

Tradition. Excellence.
3428 Lakeridge Place NW Suite 200
Rochester MN 55901 (507-529-1161)

100

BIGELOW HOMES

OWNER:

EAGLE BASIN MODEL 5-16

59. FT.

2

REV.

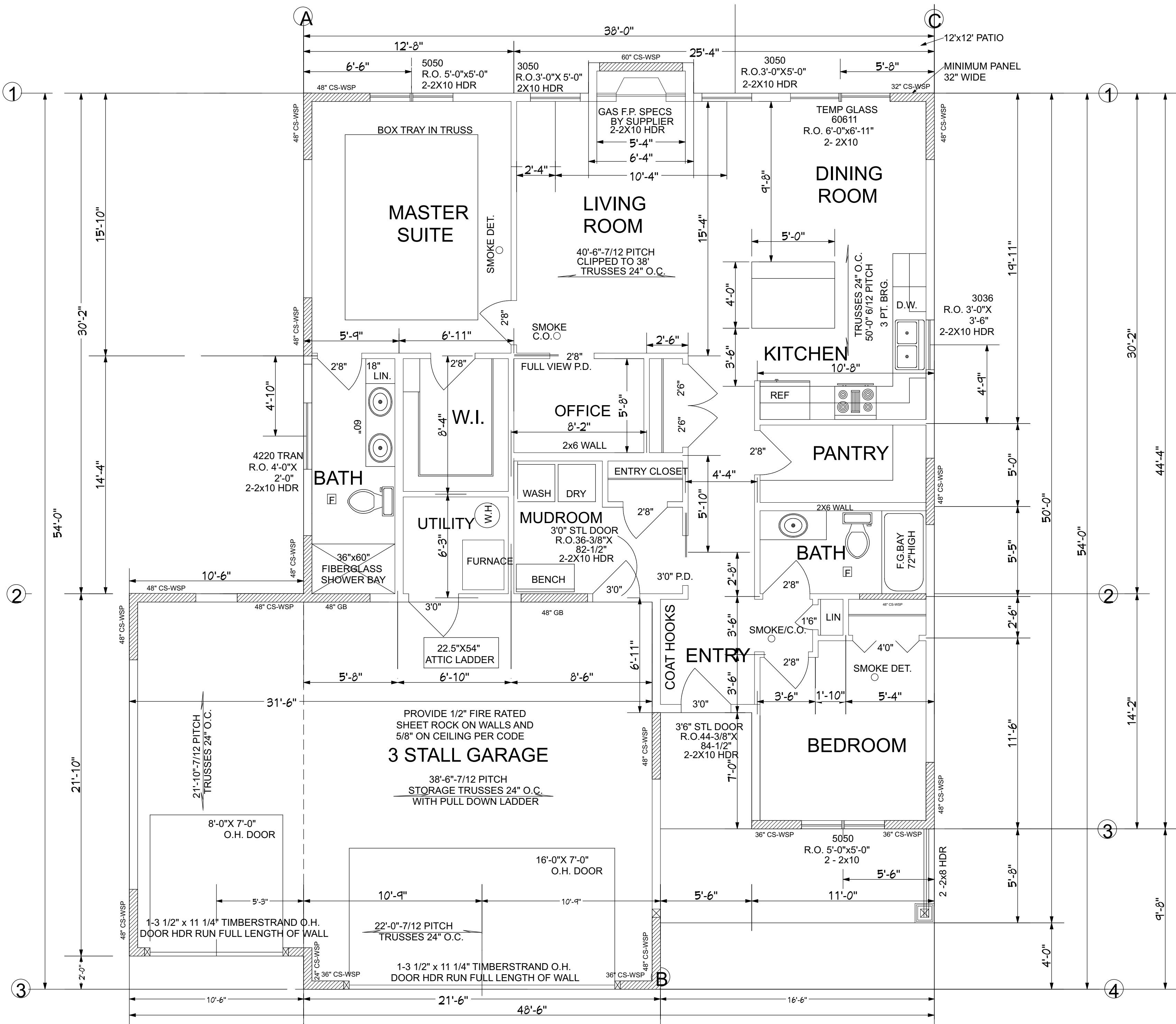
$$\frac{G}{B} = 140$$

by: GFV

Sheet: 0F:

24

06.21.24



MAIN FLOOR PLAN
SCALE 1/4"=1'-0"
CEILING HEIGHT 9'-3 3/8"
(USING 9' STUDS)

<div>CONTRACTOR: <div>BIGELOW HOMES</div></div>				<div>These plans have been reviewed and approved for construction as drawn. Additional changes will require a change order form.</div>		<div>Buyer:</div>		<div>Date</div>	
<div>OWNER: <div>EAGLE BASIN MODEL 5-16</div></div>						<div>Buyer:</div>		<div>Date</div>	
<div>Plan #: GV012</div>				<div>Plan In:</div>		<div>Sales Rep.</div>		<div>Date</div>	
<div>SQ. FT. H. = 1328 G. = 748</div>				<div>Rough: REV. 0</div>					
<div>By: GFV</div>				<div>Final: 06.21.24</div>					
<div>Sheet: 3 OF 4</div>									

These plans are intended by Bigelow Enterprises INC. as a guide for builders who are knowledgeable about normal construction standards and local codes and practices. Bigelow Enterprises INC. will review its plans to ensure they are in accordance with applicable codes and standards. Bigelow Enterprises INC. assumes no responsibility for any errors, omissions or improper construction thereafter.

